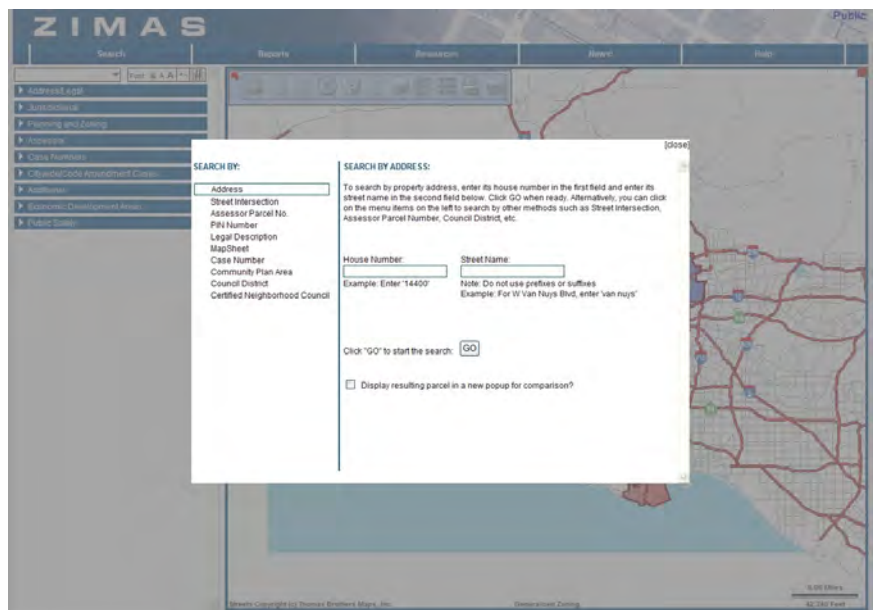


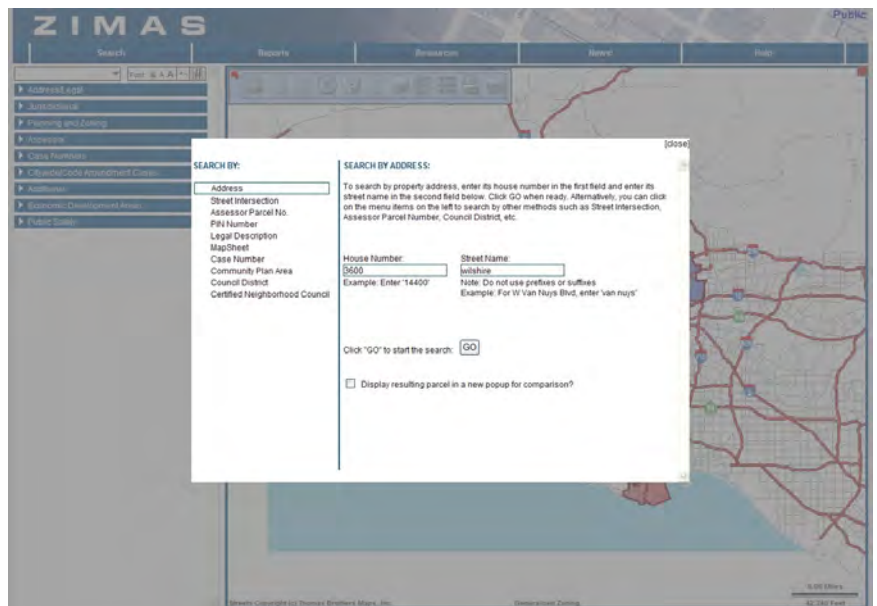
How to get copy of CUP or CUB, City of Los Angeles.

This guide is for real estate agents who are familiar with CUP or CUB (Conditional Use Permit, Alcoholic Beverage).

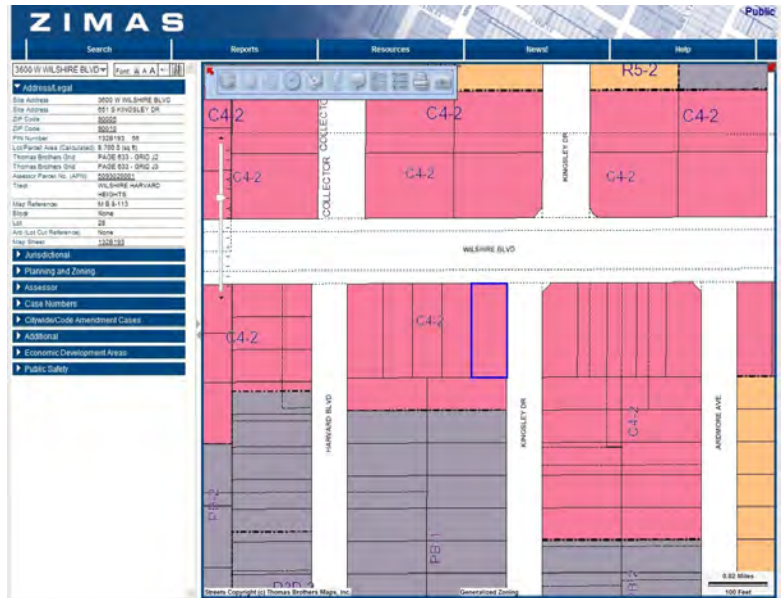
1. Click [Here](#) or go to <http://zimas.lacity.org/>.



2. Input Address.
*Street number & name only.

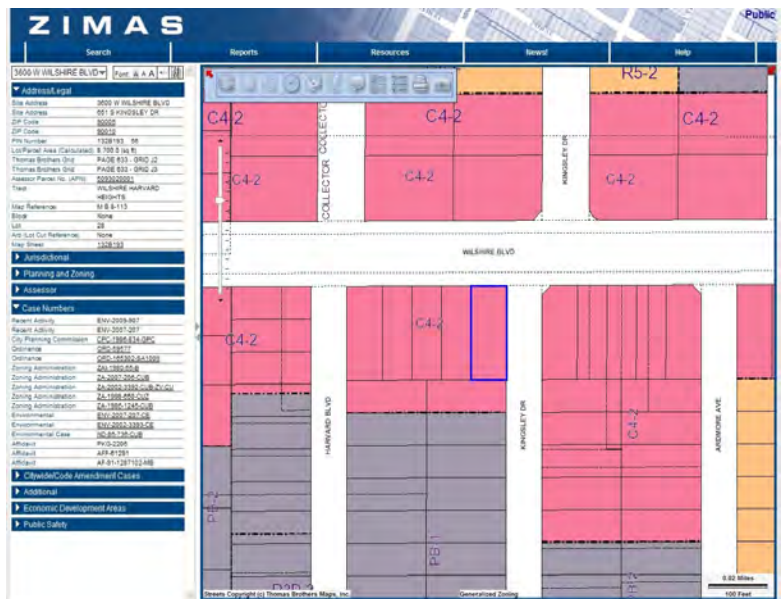


3. Click on **Case Numbers** menu on the left.



4. The menu will expand and show Case Numbers.

5. Click on a **number** ends with **CUB**.



6. For Summary of the CUB case, click on **Summary PCTS**.

For the whole documents of CUB, click on **PDIS**.

ZIMAS

Internet Application-Access-Routing-Screen

Case No. ZA-2007-206-CUB

Summary PCTS (Summary Planning Case Tracking System). Access Summary Status Information Related to this Case.

PDIS (Planning Document Information System). Access Images of Documents related to this Case. Click Here for Document Availability Information.

You will need free Adobe Acrobat Reader to View Documents.
You will also need either Internet Explorer(IE) 5.0 or higher or Netscape Browser 6.0 or Higher.

7. Click on **blue sections with Documents Available**.

Application Routing Screen
ZIMAS
GLOSSARY

Planning Document Information System Comprehensive Selection Screen

For your convenience documents have been categorized into five (5) Case Flow Processes used by the Department of City Planning. The number displayed in the parentheses on each button indicates the number of available documents for that Case Flow Process. A zero (0) indicates no documents available. Definitions for each Case Flow Process can be viewed by placing your cursor over the desired button below or by clicking on the Glossary link to your left.

Case No. ZA-2007-206-CUB

Initial Actions (3) Documents Available	Appeal Actions (0) Documents Available	Council / Other Actions (0) Documents Available	Plan Approval / Modifications (3) Documents Available	Approved Plans (0) Documents Available
--	---	--	--	---

Initial Action: First Decision regarding a request for land use changes. The Action includes a Decision Document (including findings), Recommendations, Corrections, Letters, etc. The first action may be by the Director of Planning, Zoning Administrators, Area Planning Commissions, or the City Planning Commission.

8. 3 documents are available.
Choose any button.

Los Angeles Department of City Planning
Planning Document Information System

Case No. ZA-2007-206-CUB

Initial Action Documents (1) documents available
Initial Exhibits (2) documents available

Comprehensive Page
Application Routing Screen
ZIMAS
GLOSSARY

Copyright Los Angeles Department of City Planning Current Version: 3.0.0

9. Click on the Blue Highlighted **Determination Letter**.

It will start downloading your document.

Be patient. It may take minutes to be completed.

Los Angeles Department of City Planning
Planning Document Information System

INITIAL DECISION/ACTION DOCUMENTS
Case No. ZA-2007-206-CUB

Document Name	Signed Off for Approval	Revision	Scan Date	Count
Determination Letter	No	1	20070926	(1)

Comprehensive Page
Application Routing Screen
ZIMAS
GLOSSARY

Copyright Los Angeles Department of City Planning Current Version: 3.0.0